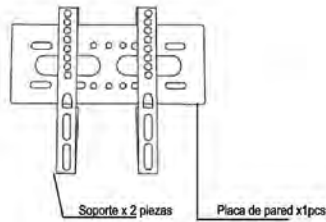


EURO SOUND

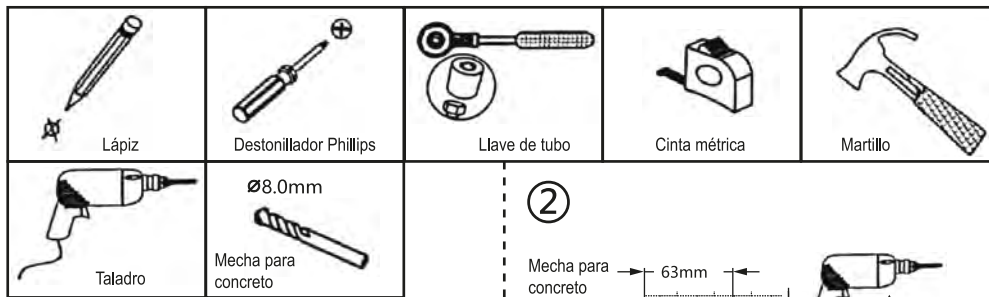
SOPORTE FIJO PARA TV LCD/LED DE 15" A 43" | Mod. ESF1000

1. Lista de piezas

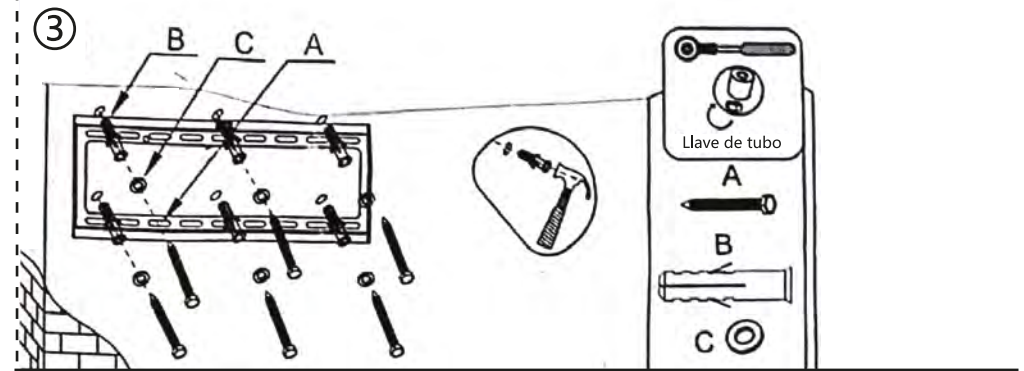
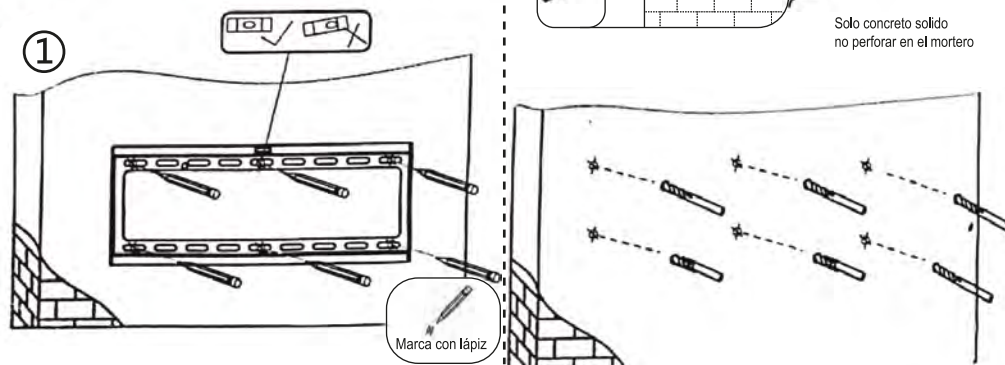


- | | | | | |
|---------------------------------|---------------------------------|---------------------------------|-------------------------------|---------------------------------|
| (A) x4PCS
M6x45mm
 | (B) x4PCS
10x50mm
 | (C) x8PCS
Ø6mm
 | (D) x10PCS
10mm
 | (E) x2PCS
M5x35mm
 |
| (F) x4PCS
M5x25mm
 | (G) x4PCS
M6x25mm
 | (H) x4PCS
M8x30mm
 | NIVEL (1pcs)
 | |

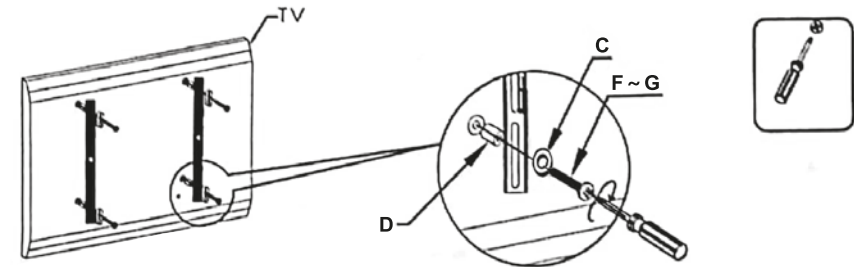
HERRAMIENTAS NECESARIAS



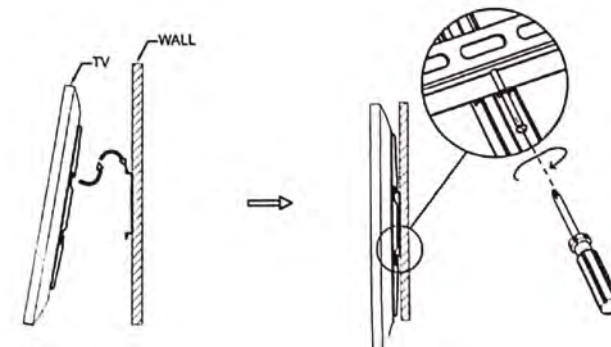
Paso -1 Montaje de la placa de pared:



Paso 2: Montaje de los soportes de TV en un televisor con parte posterior plana



Paso 3: Colocar el televisor en la placa de pared y agregar un tornillo de seguridad



OK

